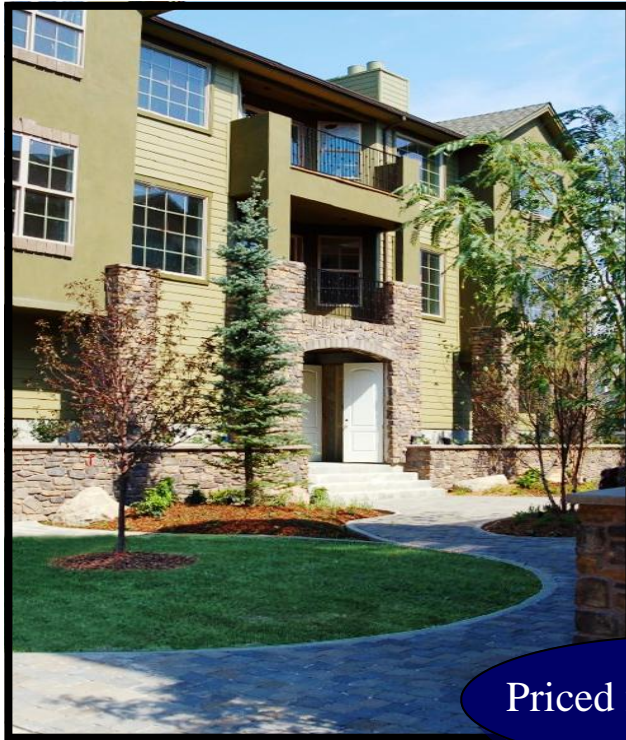


Highlands Village

New Homes in the North End

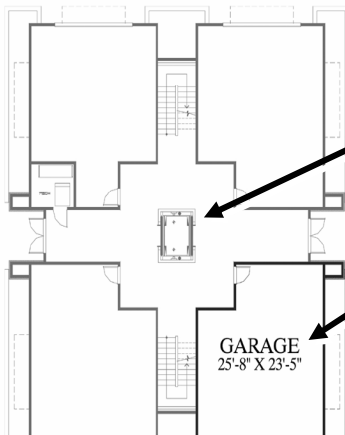
“Best Value in Boise”

Idaho Smart Growth Winner



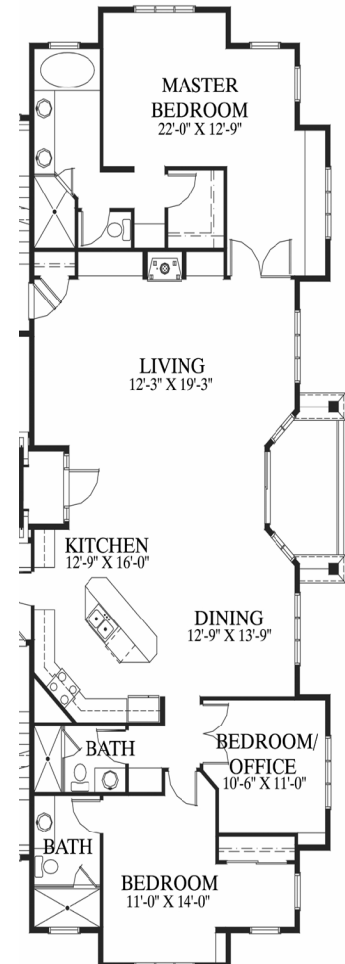
The Highlands “Luxury North End Flats”

Priced from \$488,900



Private Elevator
NO STAIRS to climb!

2 Car Private Garage



- Approximately 2,060 sq. ft. Single Level Flat Home.
- Private 2 Car Oversized Garage.
- Your Private/Secure Elevator Access to Your New Home!
- 3 Bedroom / 3 Bathrooms / Office / Private Deck
- A Condominium built to Town Home Standards.
- **Location, Location, Location...**
- 25 minutes to Bogus Basin Ski Resort
- Walking Distance to Historic Hyde Park and Downtown!